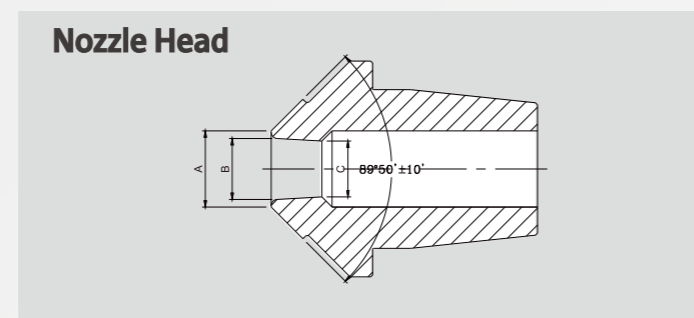
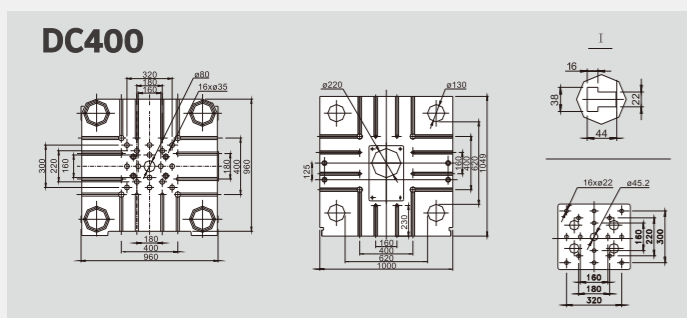
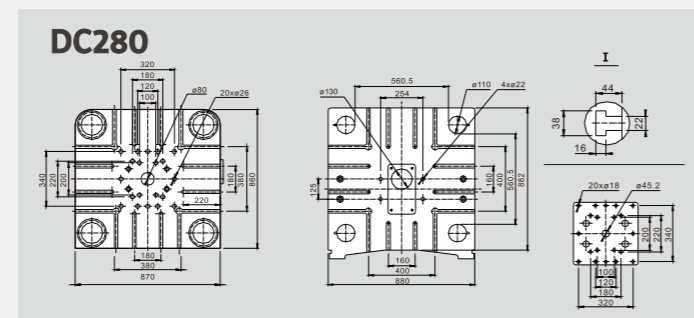
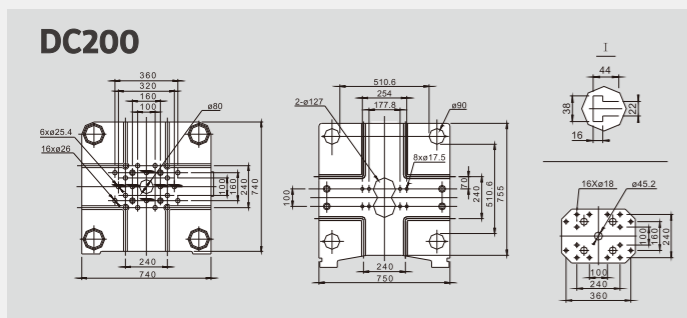
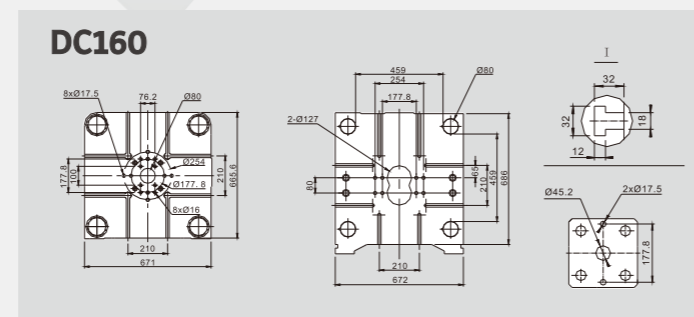
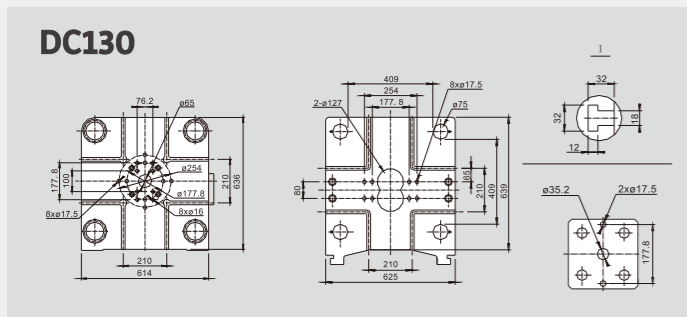
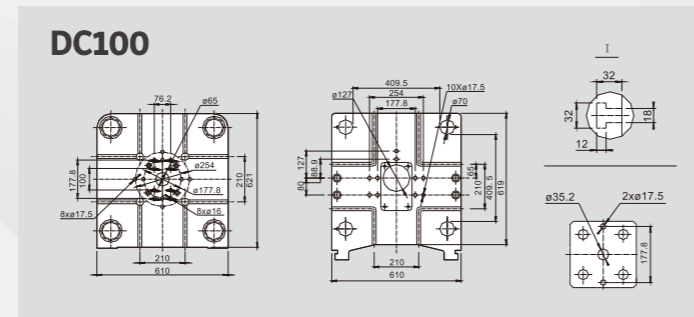
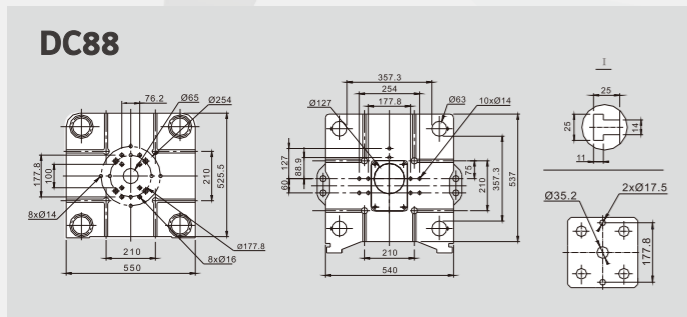
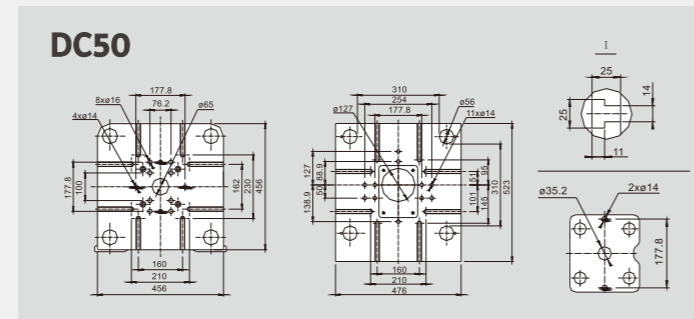
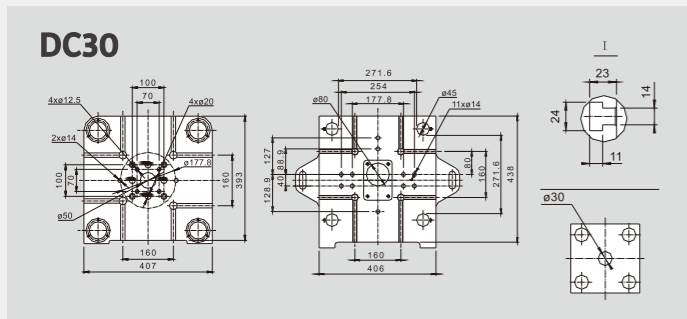


Platen Dimensions



* We reserve the right to make any technical improvement without further notice.

LK Machinery International Limited

Address: Unit A, 8/F, Mai Wah Industrial Building, 1-7 Wah Sing Street,
Kwai Chung, New Territories, Hong Kong
Tel: +852 3412 5500 Fax: +852 3412 5511
Website: www.lk.world
E-mail: sales@lk.world



LinkedIn



Facebook



Website

CAT. NO.: E21-06-10

AVIS-II

Hot Chamber Die Casting Machine

AVIS-II Series

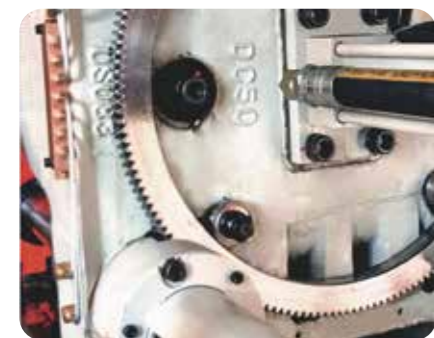
Hot chamber die casting machine

AVIS-II represents high quality, professional and high efficiency die casting which has more high standard features with latest technology, which are able to fulfill high requirements on die casting industry nowadays. Thousands of AVIS machines series are now serving different customers worldwide.



Control system

Advanced PLC with large size touch LCD ensures reliable and easy operation.



Strong casting platen

with gear type hydraulic driven die height adjust mechanism, makes clamping unit durable and remarkable for die-casting.



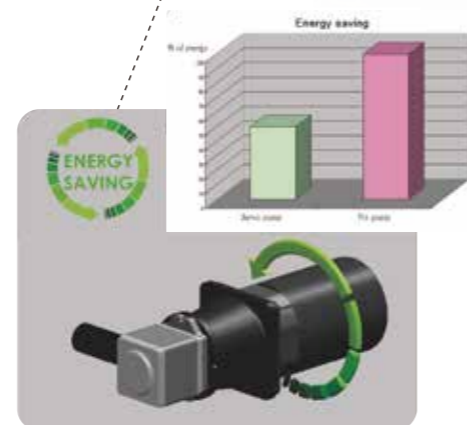
Centralized automatic toggle lubrication system

Equips with piston type accumulator and proportional injection control, the injection can achieve 5 m/s or above with two stage speed control and easy.



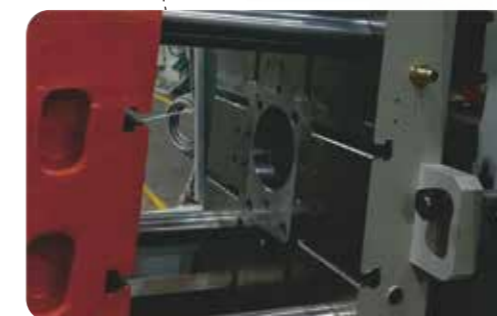
Professional injection system

Equips with piston type accumulator and proportional injection control, the injection can achieve 5 m/s or above with two stage speed control and easy.



Energy saving servo pump

Advanced servo technology in pump system provides up to 50% energy saving.



Multi shot-position

Offers more flexibility for die design and production, fits nowadays production model.

Standard features

- Safety doors
- Hydraulic ejector
- Hydraulic nozzle engagement
- Electrical heating nozzle, gooseneck
- Electrical heating furnace

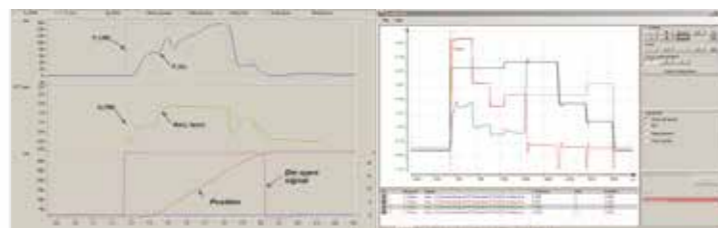
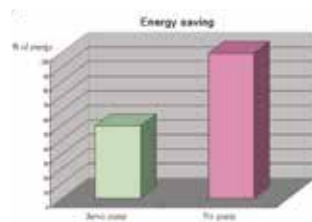


Operation is more easy and more user-friendly

The AVIS-II has equipped with 10" touch LCD, allow operator to work more easy, and lots of data are available on the screen which are required by nowadays high requirement production and process control.

Excellent hydraulic system with proportional pressure and flow control for best performance

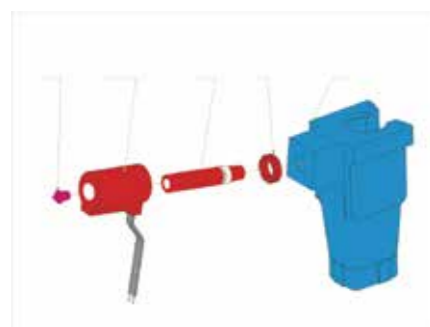
Energy saving



Thanks to the advanced servo technology, the new servo pump system is more reliable with good performance, saving up to 50% energy. It contributes to less production cost as well as more environmental friendly.

High efficient tubular type heat exchanger is equipped to avoid blockage of cooling water channels and hence reduce maintenance.

Professional



Professional injection system with electrical heating nozzle and gooseneck ensures quality castings and long working life.



Fix spraying nozzles (option) are effective tool for good casting.

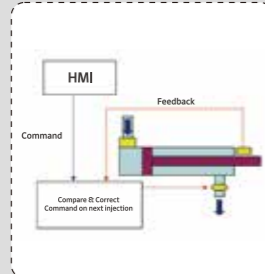


ITEM	Classic-III	AVIS-II
Control	7" LCD	10" LCD
Gear type die height adjustment	Standard	Standard
Hydraulic ejector	Standard	Standard
Hydraulic nozzle engaging	Standard	Standard
Piston type accumulator	Standard	Standard
Accumulator charging pressure setting	Analogue	Analogue
Die opening stroke control	Analogue	Analogue
Pump	Fixed Pump	Energy Saving Servo Pump
Fixed spraying nozzle	Option	Option
Standard furnace	Diesel Furnace	Elec. Furnace
Core pulling	Std for DC130 or above	Std for DC50 or above
Pneumatic sweeper	Option	Option
Injection speed control	Hand wheel	Proportional Control
Injection curve display	Option	Standard

Options



Professional HMI Siemens 9" or 12" Touch LCD and SPC function



LK Smart injection control system



Smart process assistance



Clamping force display



Air conditioner for the control cabinet



Pneumatic sweeper for casting removal



Quick die change system



Gas or Diesel heating furnace replace electrical furnace



Furnace safety guard



US CE
U.S. / CE Standards

- Extra core pull
- Auto safety door
- Smart die height adjustment
- Separate plate for furnace
- Double chamber furnace
- LK-Net system

Additional Options

Peripherals



Automatic ingot loader



Automatic extractor



Automatic servo linear extractor with sprayer



Automatic servo linear sprayer



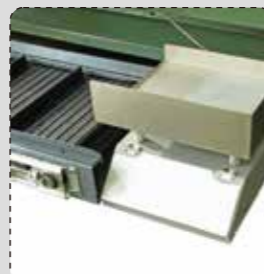
Hydraulic trim press (able to interface with robot arm)



Automatic portering system (central furnace)



Conveyor



Electrical casting scale



6-axis extracting robot with gripper



Auto die lubricant dilutor

Specifications

ITEM	UNIT	DC30	DC50	DC88	DC100	DC130	DC160	DC200	DC280	DC400
Clamping force	kN	300	500	880	1000	1300	1600	2000	2800	4000
Die opening stroke	mm	180	230	280	300	350	350	400	460	550
Die height (min. - max.)	mm	100-310	120-340	150-350	150-450	170-450	205-505	250-550	250-650	300-750
Platen size (HxV)	mm	407x393	456x456	535x545	610x621	614x636	671x666	740x740	870x860	960x960
Space between tie bars	mm	271.6x271.6	310x310	357x357	409x409	409x409	459x459	510x510	560x560	620x620
Ejector force	kN	30	50	50	70	88	108	108	158	180
Ejector stroke	mm	50	60	60	70	85	85	100	100	120
Injection force	kN	40	52	65	89	108	108	130	158	182
Injection stroke	mm	110	130	130	150	150	150	175	200	230
Plunger diameter	mm	36 40 45 45 50 55 45 50 55 55 60 60 65 60 65 70 60 65 70 70 80 70 80 90								
Shot weight (Zn)	kg	0.55 0.68 0.87 1 1.26 1.53 1 1.26 1.53 1.76 2.1 2.1 2.4 2.1 2.4 2.86 2.5 2.9 3.3 3.8 5 4.4 5.7 7.2								
Casting pressure	MPa	39.5 32 25.3 32.7 26.4 21.8 42 34 28.1 37.4 31.5 38.9 33.1 38.9 33.1 28.6 47 40.1 33.7 41 31.4 48.2 36.9 29.2								
Casting area	cm ²	75.9 93.7 118.5 152 189 229 209 258 313 267 317 334 392 411 483 559 425 498 593 681 888 829 1084 1369								
Shot position	mm	0 -40 0 -50 0 -60 0 -80 0 -80 0 -80 0 -100 0 -125 0 -125								
Nozzle traverse stroke	mm	150 190 190 200 200 200 200 200 340								
Hydraulic working pressure	MPa	8 10.5 10.5 14 14 14 14 14 14								
Oil tank capacity	L	200 200 250 300 300 300 400 500 800								
Nozzle heating	kW	1.5 2 2 2.5 2.5 2.5 4 5 5								
Furnace capacity (Zn)	dm ³ (kg)	40/(260) 50/(330) 50/(330) 55/(360) 55/(360) 55/(360) 110/(720) 110/(720) 200/(1350)								
Furnace power	Electricity	kW	26 30 30 30 42 30 42 30 42 42 65 42 65 80							
	Diesel	kg/h	3.5 4.8 4.8 4.8 4.8 4.8 6.3 6.3 11.2							
Machine dimension (LxWxH)*	mm	3820x1630x1870 3930x1700x2150 4080x1700x2010 4980x1640x2230 5040x1695x2230 5060x1790x2230 5700x1870x2470 6250x1900x2530 6850x2250x2890								
Machine weight	kg	2600 3400 4000 5500 5700 6000 7800 11000 17500								

■ Optional

* We reserve the right to make any technical improvement without further notice.
* The machine dimensions does not include furnace and control cabinet.
* Machine weight does not include any options or peripherals

CAT. NO.: E21-06-10